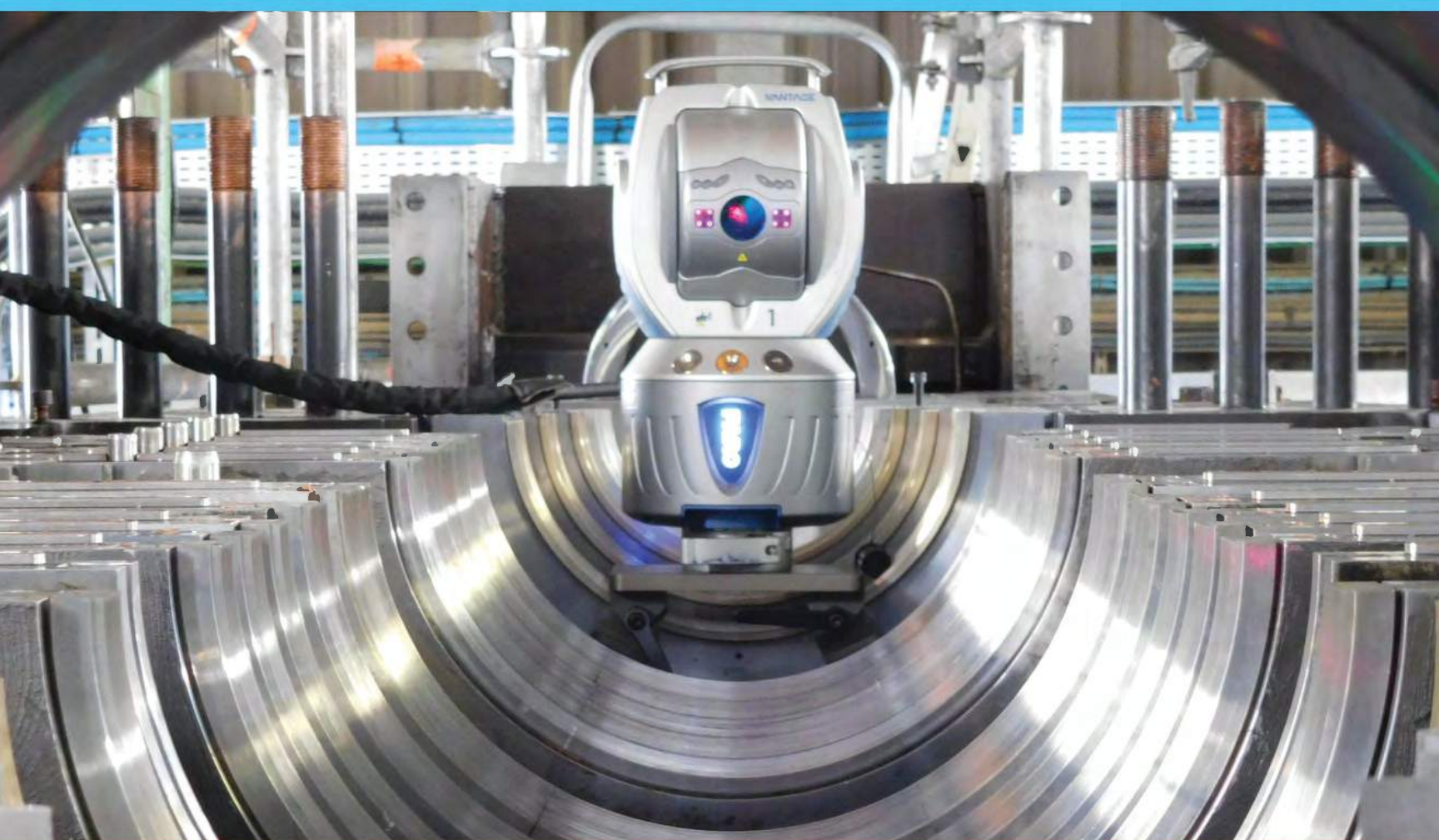




AXIS MECHANICAL GROUP



"WE MAKE PROJECTS REVOLVE"



COMPANY OVERVIEW

Axis Mechanical Group is a union millwright company that provides turnkey solutions for installation, maintenance, repair, overhaul, and upgrade of industrial rotating and reciprocating equipment for the petrochemical industry.

AMG's combination of experienced professionals and the latest technology ensures the safest and highest quality of work, making us the reliable choice.

At AMG, we know one key factor to a seamless execution of any petrochemical turnaround starts with project planning. Our experienced technical field supervisors will work with you and become an integral part of your facilities TA and BOP planning process.

In addition to planning, AMG has the tooling and equipment needed to handle any size job.



OUR SERVICES

Axis specializes in Installation, general maintenance, repair, complete turnaround, overhaul and upgrade of...

STEAM TURBINES

GEARBOXES

COMPRESSORS

PUMPS

EXTRUDERS

MIXERS

GENERATORS

INDUSTRIAL ENGINES
& ASSOCIATED EQUIPMENT



LASER-TRACKING SERVICES



Axis Mechanical Group offers advanced, accurate, and versatile laser tracking services with the new FARO Laser Tracker Vantage®.

The FARO Tracker Vantage System® provides the world's most complete laser tracking solution allowing AMG to accurately (within 0.0006") align and verify the centerline alignment of any piece of rotating or reciprocating equipment.

By using this equipment, AMG can complete jobs faster, reduce downtime, eliminate costly scrap, and provide accurate, consistent, and reportable measurement data to our customers.



KITTED BOXES



Axis Mechanical Group offers custom built kitted boxes to organize and house everything, from parts to special tooling, for your projects.

Customized kitted boxes give the customer the ability to streamline any project, large or small, by allowing planners and coordinators to organize and execute project tooling effectively.

Our designers will work with you to assess and understand your needs for designing and building your perfect kitted box.



FIELD MACHINING



AMG offers a strong team of field machinist that can deliver top quality field machining on a large variety of applications.

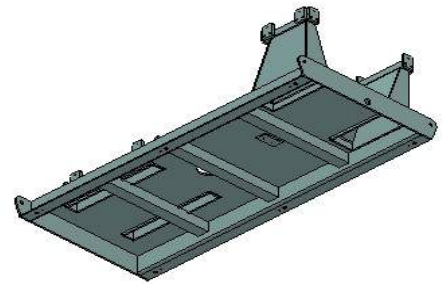
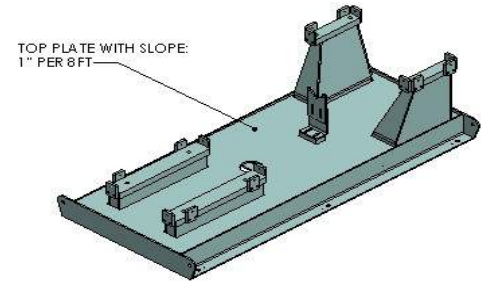
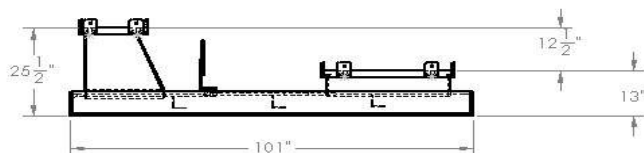
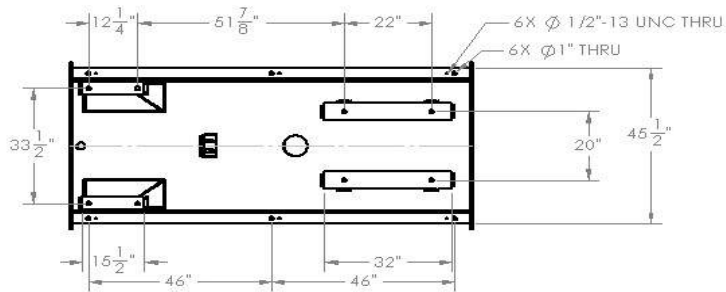
Some of the services provided include but are not limited to :

Base plate machining
Flange facing
Milling

Stud Removal
Drilling/ Doweling
Line Boring



PUMP BASE CAPABILITIES



Axis Mechanical Group can design and fabricate pump bases for our customers desired specs and measurements.

We start by constructing a precise CAD drawing from your specified dimension. Then diligently fabricate the base in house. After completion of the base, our Millwrights can install the base and the equipment in the field. Axis Mechanical Group is your turnkey solution for pump bases!

We Make Projects Revolve!

AXIS MECHANICAL GROUP
5916 E Sam Houston Pkwy S
Houston TX 77034